

Pancreatic Protrusion: A Rare Case of Grade IV Hiatal Hernia with Complete Pancreatic Herniation



AMERICAN COLLEGE OF
GASTROENTEROLOGY
Advancing Gastroenterology, Improving Patient Care



Shil Punatar, DO, Ahamed Khalyfa, DO, Kenosa Okafor, MD
Department of Internal Medicine, Franciscan Health Olympia Fields IL

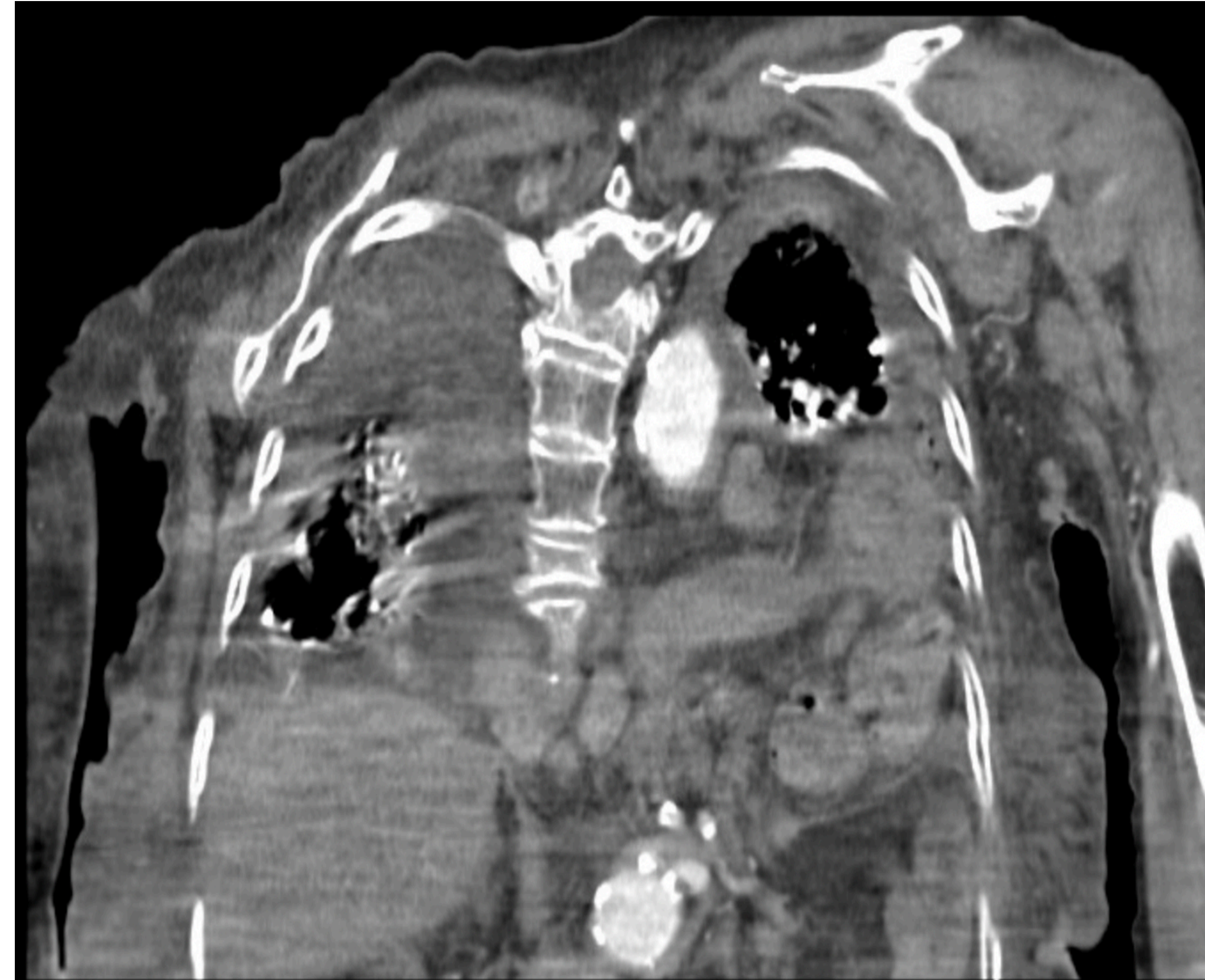
INTRODUCTION

- Hiatal hernias are commonly described as herniation of abdominal contents through the esophageal hiatus of the diaphragm.
- With this, classification systems exist to define hernias as either sliding or type one, or to consider types two, three and four as paraesophageal which also present with other sequelae. While most commonly, hiatal hernias are type one and less severe in nature, five percent of cases become more involved and severe.
- The current prevalence of hernias ranges between ten to 80 percent of North Americans.
- In this case, we shed light on the diagnosis and imaging of a rare sequelae of hiatal hernia which included not only small and large protrusion, but also herniation of the pancreas.

CASE PRESENTATION

The patient is a 95 year old woman with a past medical history significant for abdominal aortic aneurysm as well as a large hiatal hernia presenting with a chief complaint of poor oral intake over the last several days prior to presentation. The patient was found to be significantly lethargic compared to baseline and reported decreased oral intake due to discomfort after eating. The patient's initial vitals demonstrated a mild tachycardia with initial lab findings within normal ranges. A CT chest and abdomen was performed which demonstrated a large hiatal hernia, which now contained loops of small and large bowel as well as the pancreas.

CT CHEST ABDOMEN AND PELVIS



Official Diagnostic Read:

Large hiatal hernia now containing loops of small and large bowel and a portion of the pancreas.

Diagnostic Read and Discussion:

Large hiatal hernia with pancreatic protrusion noted with surrounding calcification of splenic vasculature, progressed since prior imaging 6 months earlier



REFERENCES & ACKNOWLEDGEMENTS

References: *Types of Hiatal Hernia* | Download Scientific Diagram - Researchgate.
https://www.researchgate.net/figure/Types-of-hiatal-hernia_fig1_349912122.

Acknowledgements:

We would like to thank Franciscan Health Olympia Fields for their financial and academic support in pursuit of trainee research and educational opportunities.

MANAGEMENT & OUTCOME

- During the hospital course, the uniqueness of presentation of pancreatic protrusion was discussed as well as the current treatment and monitoring modalities of a Grade 4 hiatal hernia, now presenting with complications.
- Ultimately, the discussions were conducted with the patient who reported she was most amenable to comfort focused care with a pleasure based diet in an attempt to avoid any medical and surgical intervention.

DISCUSSION

- In emergent cases, such as with respiratory distress and bowel strangulation, emergent surgical intervention is considered in cases of hiatal hernia.
- However, lesser defined and established are the findings and management as well as treatment modalities of more severe hernias involving protrusion of pancreatic contents.
- Here, we add to imaging the unique presentation of a common diagnosis with rare sequelae. We also hope to add to a growing body of literature on the imaging, and potential stepwise approach to management of type 4 hiatal hernias with severe and emergent treatment considerations.

TYPES OF HIATAL HERNIA

