

USE OF A BIOACTIVE MATRIX DRESSING: CASE STUDIES ON EFFICACY WHEN APPLIED ON PARTIAL THICKNESS WOUNDS

Trisha Myers MSN, APRN, FNP-BC¹
¹ Burn and Reconstructive Centers of America

INTRODUCTION

- Skin and skin disorders can be a challenge clinically. Ideally, a dressing should provide adherence, transparency, ability to manage exudate, be easy to use, and come in a variety of sizes to treat various types of wounds.
- We found a flexible, bioactive matrix coated with silicone to meet all of these needs. The flexibility allows for earlier mobilization. It's porosity can be varied by allowing different amounts of stretch, so this contributes to customized exudate management, based on the needs of any particular wound.
- Because it is applied once, this reduces OR time and the need for multiple dressing changes.
- We share our experience with two difficult cases in which the benefits of this temporary dressing played a huge role in resolution of these wounds.

METHODS

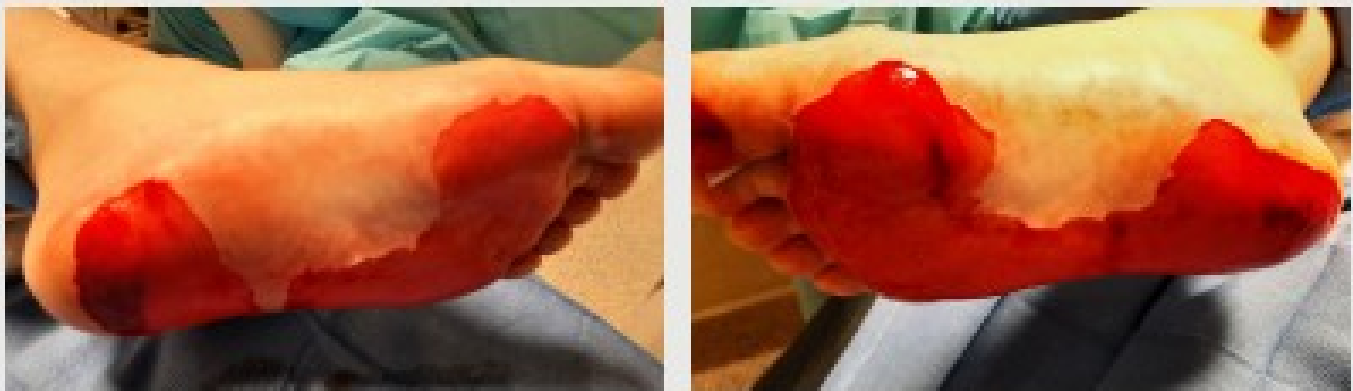
- Case studies (chart review).
- This study was granted exemption by Castle IRB.

CASE STUDY 1

- 26-year-old female presented with generalized rash for 1 day
- Assessment revealed significant oral/lip involvement, scattered macular/papular rash, and large blisters to plantar feet
- Punch biopsy confirmed Toxic Epidermal Necrolysis Syndrome (TENS)



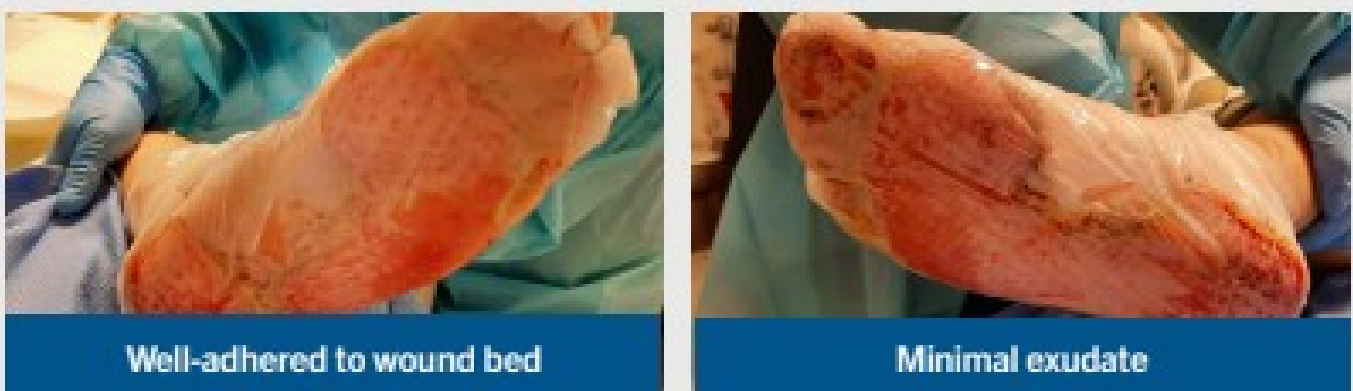
POST-DEBRIDEMENT



DAY OF APPLICATION



DAY 2 POST-APPLICATION | DRESSING CHANGE AND ASSESSMENT



DAY 9 POST-APPLICATION



Bioactive matrix was removed and patient had 100% wound closure

CASE STUDY 2

- 84-year-old female presented with 1 month duration of blisters to hands and feet
- Assessment revealed scattered blisters to hands/feet with scabbed area
- Punch biopsy confirmed Bullous Pemphigoid



BIOACTIVE MATRIX GLOVES



DAY OF APPLICATION



DAY 6 POST-APPLICATION



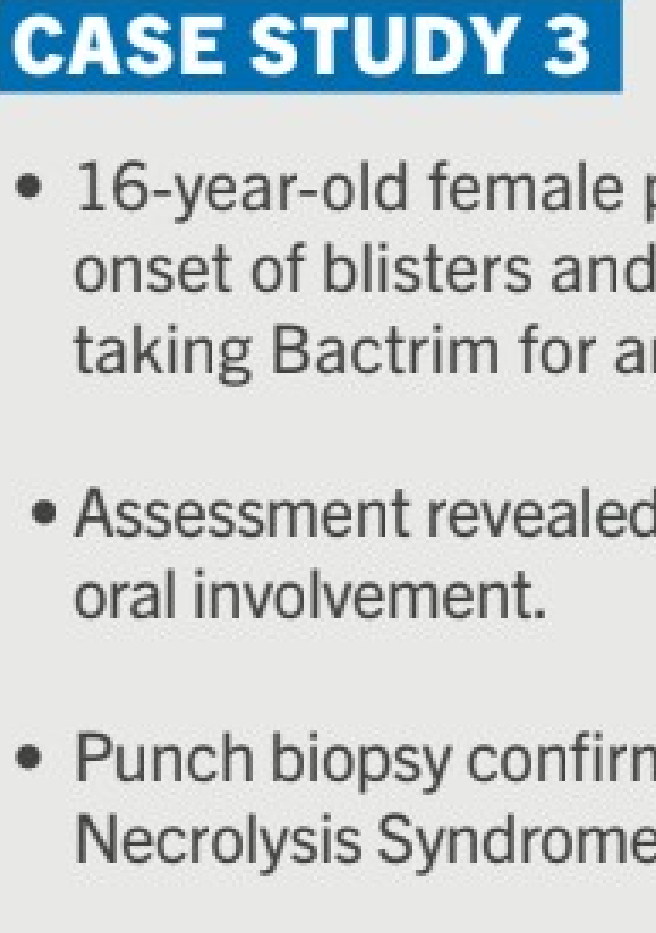
DAY 9 POST-APPLICATION



Bioactive matrix was removed and patient had 100% wound closure

CASE STUDY 3

- 16-year-old female presented with 2 day onset of blisters and epidermal slough after taking Bactrim for an infected pilonidal cyst.
- Assessment revealed 65% TBSA slough with oral involvement.
- Punch biopsy confirmed Toxic Epidermal Necrolysis Syndrome.



POST-DEBRIDEMENT



DAY OF APPLICATION



DAY 14 POST-APPLICATION



Bioactive matrix was removed and patient had 100% wound closure

CONCLUSIONS

- This bioactive matrix dressing is easily applied at the bedside or in the operating room.
- The bioactive matrix dressing was well-tolerated and posed no significant risk to these patients.
- A bioactive matrix dressing is an effective alternative wound dressing for partial thickness wounds.

DISCLOSURES:

- Milliken Healthcare provided funding for travel and registration for the author.
- This project received exemption from Castle IRB.