

INTRODUCTION

- Cecal bascule is a rare form of cecal volvulus
- Characterized by an anterior and superiorly displaced cecum leading to large bowel obstruction (LBO)
- Accounts for 0.01% of adult LBO
- Here is a case of cecal bascule in a cirrhotic patient

CASE REPORT

- 63-year-old female with PMHx of alcoholic cirrhosis (MELD 20) and history of cesarean section presented with intermittent hematochezia and melena
- Hemodynamically stable at admission, hemoglobin 5.7 g/dL
- EGD: small esophageal varices without stigmata of recent bleed, antral duodenitis
 - Scheduled for colonoscopy due to largely unrevealing EGD
 - Experienced difficulties tolerating bowel prep due to increasing abdominal pain
- KUB: large gaseous lucency in right mid abdomen below the level of transverse colon; **concerning for cecal bascule**
- CT abdomen/pelvis: redundant cecum folding anteriorly with superior rotation into upper R hemiabdomen without definite point of transition, diffuse small bowel dilation to 4.3 cm; **findings consistent with a cecal bascule**

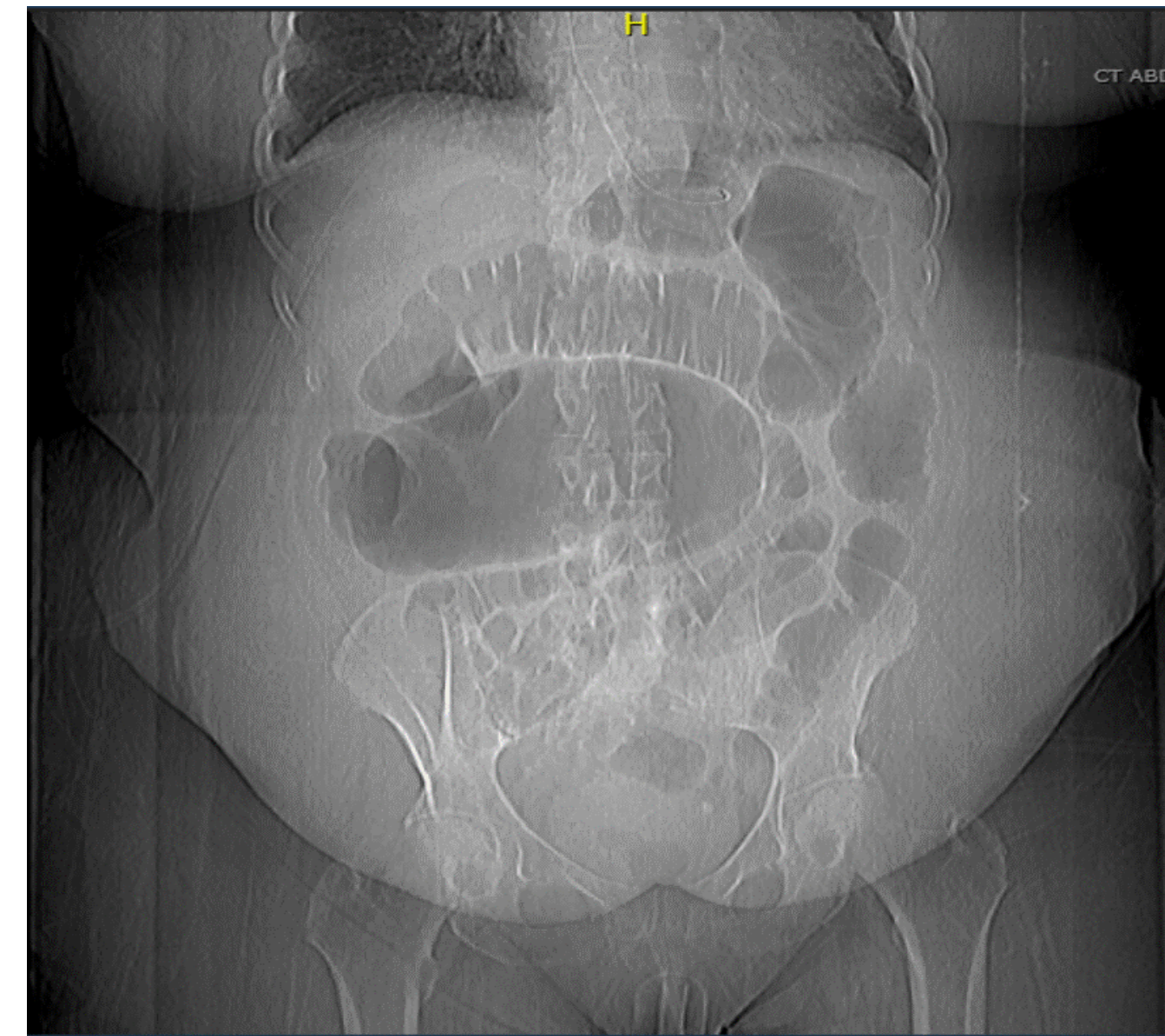


Image 1: KUB showing large gaseous lucency below the level of transverse colon

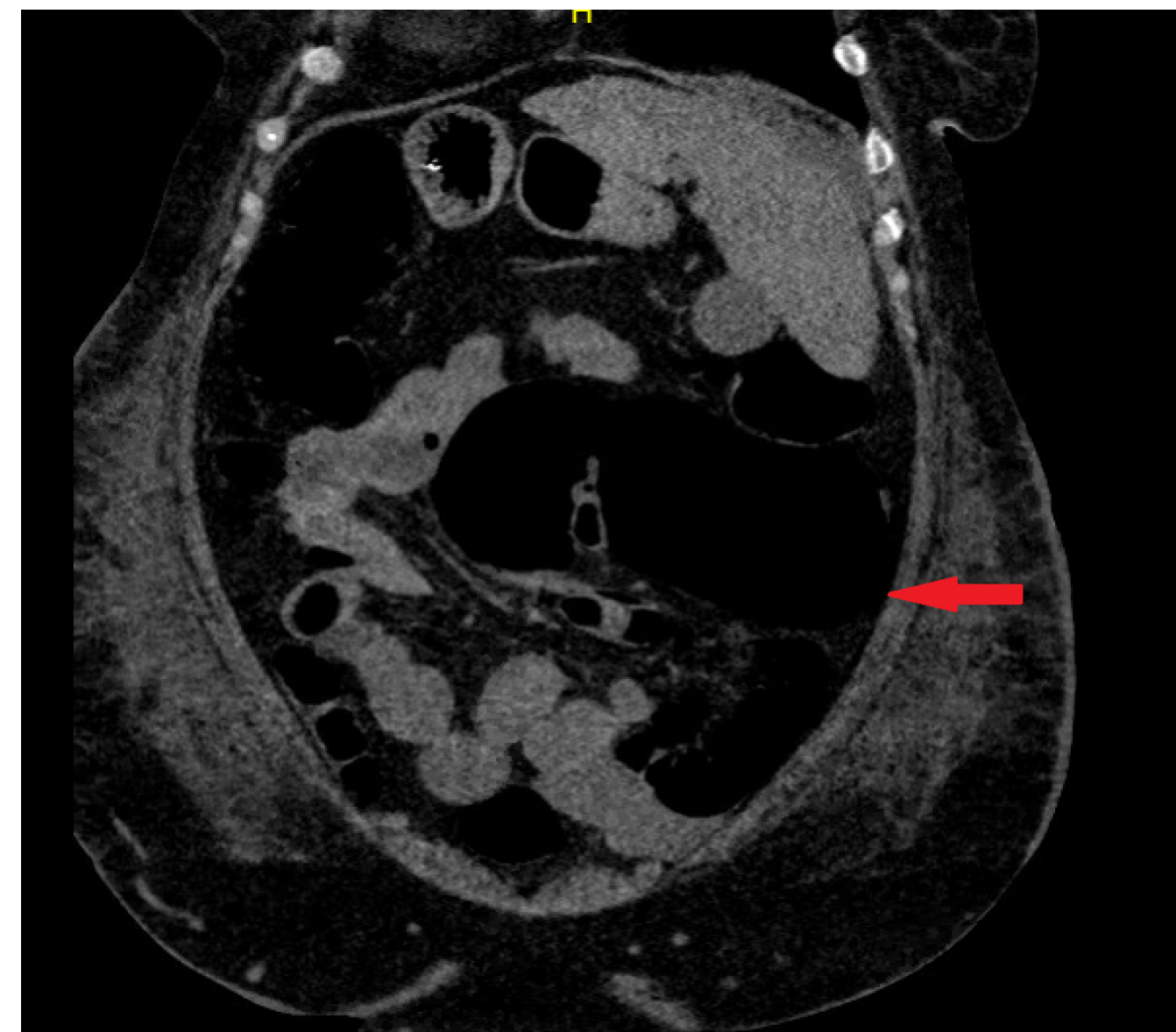


Image 2: CT abdomen/pelvis showing redundant cecum folding anterior and superior into upper R hemiabdomen

CLINICAL COURSE

- Underwent exploratory laparotomy with R hemicolectomy
- Had a prolonged, complicated post-operative course with multiorgan failure
- Died 30 days after the surgery due to complications from decompensated cirrhosis

DISCUSSION

- Cecal bascule involves upward folding of cecum
 - Most common type of cecal volvulus is axial twisting of colon
- Patient will often have a mobile and redundant colon due to:
 1. Congenital anomaly secondary to failed fusion in development between ascending colon mesentery and posterior parietal peritoneum
 2. Acquired (e.g. abdominal adhesions, pregnancy, colonoscopy)
- Treatment requires surgical detorsion to prevent further complications
- Important for early identification for proper surgical planning and appropriate intervention

REFERENCES

1. Bakshi, Chetna, et al. "Cecal bascule – A rare cause of cecal volvulus after cesarean section." *Int J Surg Case Rep.* 85 (2021) 106168.