

Introduction

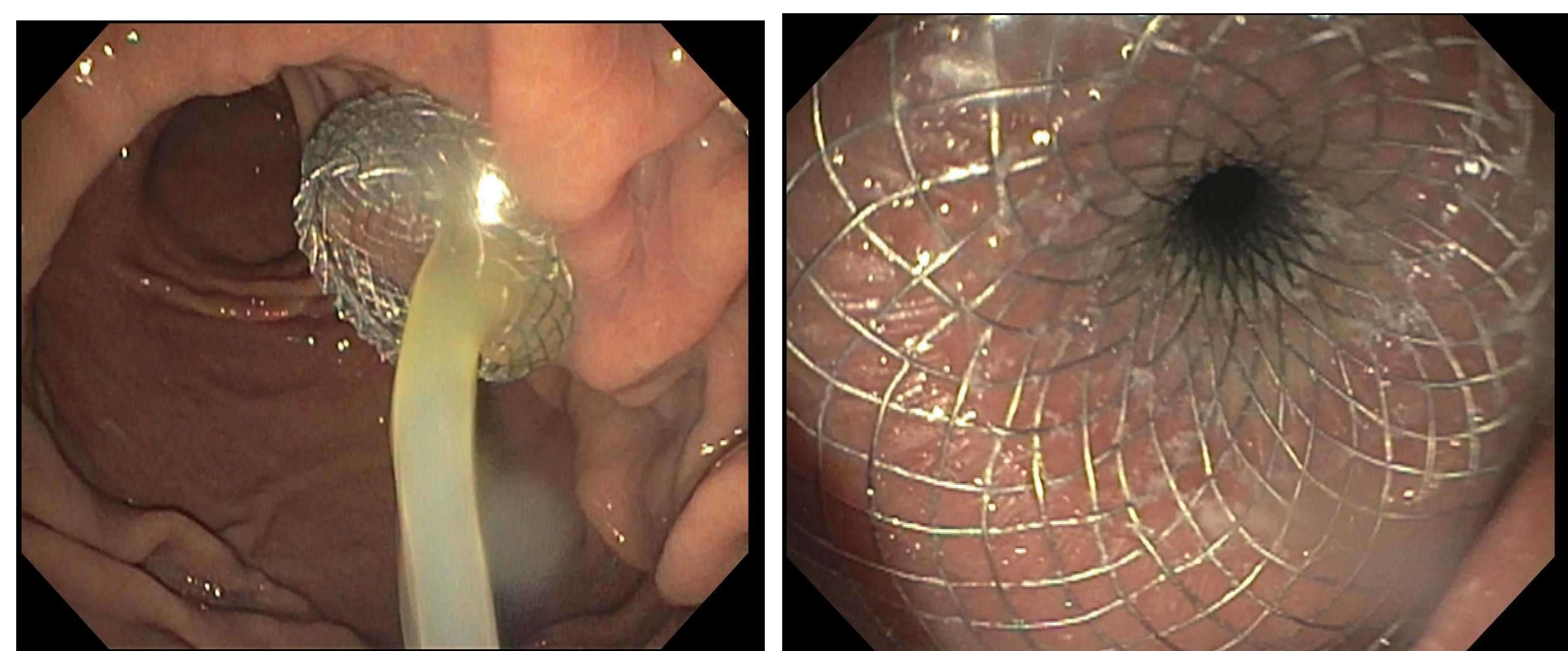
- Pancreatic fluid collections (PFC) have been drained using lumen apposing metal stents.
- Here we present a complication of the use of the lumen apposing metal stent and its subsequent management.

Case Description

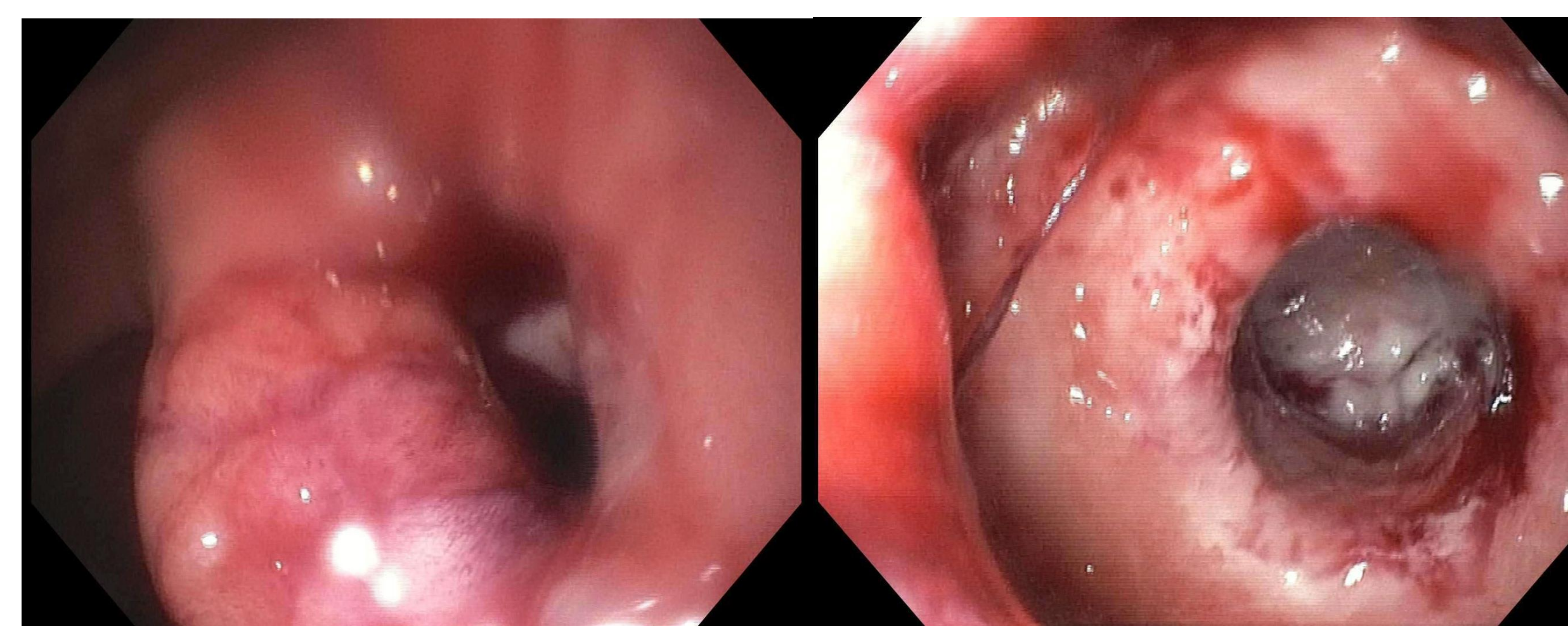
- 48 year old male with abdominal pain and recurrent pancreatitis presented with a symptomatic pancreatic pseudocyst.
- **EUS** and fluid analysis confirmed findings.
- **EGD Cystgastrostomy** successfully created with LAMS (AXIOS stent, Boston Scientific, Marlborough, MA) successfully placed to drain PFC.
- 4 weeks later EGD performed to retrieve AXIOS- demonstrated stent migration into the pseudocyst cavity.
- Pseudocyst cavity was completely drained (confirmed via EUS)
- Cyst cavity opening was re-accessed with a wire, dilated and entered, the LAMS was then grasped with Rat Tooth forceps (Boston Scientific, Marlborough, MA) and pulled into the stomach and then subsequently removed from the patient. Fluoroscopic guidance was utilized.

Discussion

- LAMS (lumen apposing metal stents) have become a common stay of treatment of PFC in creating a cystgastrostomy.
- Stent migration into the pseudocyst can occur.
- Retrieval is possible with dilation of the tract, access to the cavity, and removal via rat tooth forceps with fluoroscopic guidance.



2 views of successful placement of 15 x 10 mm AXIOS stent during cystgastrostomy (initial placement)



4 week follow up shows placed cystgastrostomy stent migrated into the pancreatic pseudocyst (left) and subsequently removed (right) with a raptor grasping device. Cavity with evidence of granulation tissue, otherwise healthy

Works Cited

- DeSimone ML, Asombang AW, Berzin TM. Lumen apposing metal stents for pancreatic fluid collections: Recognition and management of complications. *World J Gastrointest Endosc.* 2017 Sep 16;9(9):456-463. doi: 10.4253/wjge.v9.i9.456. PMID: 28979710; PMCID: PMC5605345.
- Pitchumoni CS, Agarwal N. Pancreatic pseudocysts. When and how should drainage be performed? *Gastroenterol Clin North Am.* 1999 Sep;28(3):615-39. doi:10.1016/s0889-8553(05)70077-7. PMID: 10503140.
- Smith S, Ramirez P, Hinds A, Duggan R, Ramirez J. Stent migration following treatment of pancreatic pseudocyst by cyst gastrostomy. *Proc (Bayl Univ Med Cent).* 2019;32(3):411-412. Published 2019 May 14. doi:10.1080/08998280.2019.1593796
- Mahmood SK, Kaimakliotis P. Migration of a Lumen-Apposing Metal Stent into the Colon. *ACG Case Rep J.* 2018 Feb 14;5:e14. doi: 10.14309/crj.2018.14. PMID: 29484307; PMCID: PMC5814569.