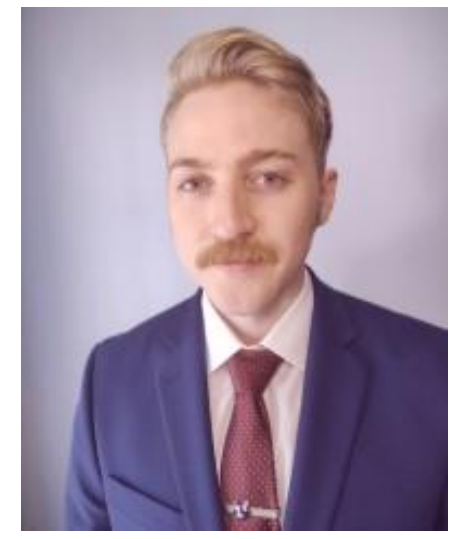


## Poke the Bear and Get the Claw



PRESENTERS:

Dane Johnson

Ali Ahmed



@DaneJohnsonMD @AliMirAhmedMD1  
@nick\_Baldwin\_MD

### Case Presentation:

- 57-year-old male
- Hepatic artery infusion (HAI) pump placement 6 months prior for local chemotherapy
- Three days before hospitalization with onset of melena
- Tachycardic (HR 128 bpm) in the emergency department

### Past Medical History:

- Stage IV colon adenocarcinoma with liver metastases
- Gastroesophageal reflux

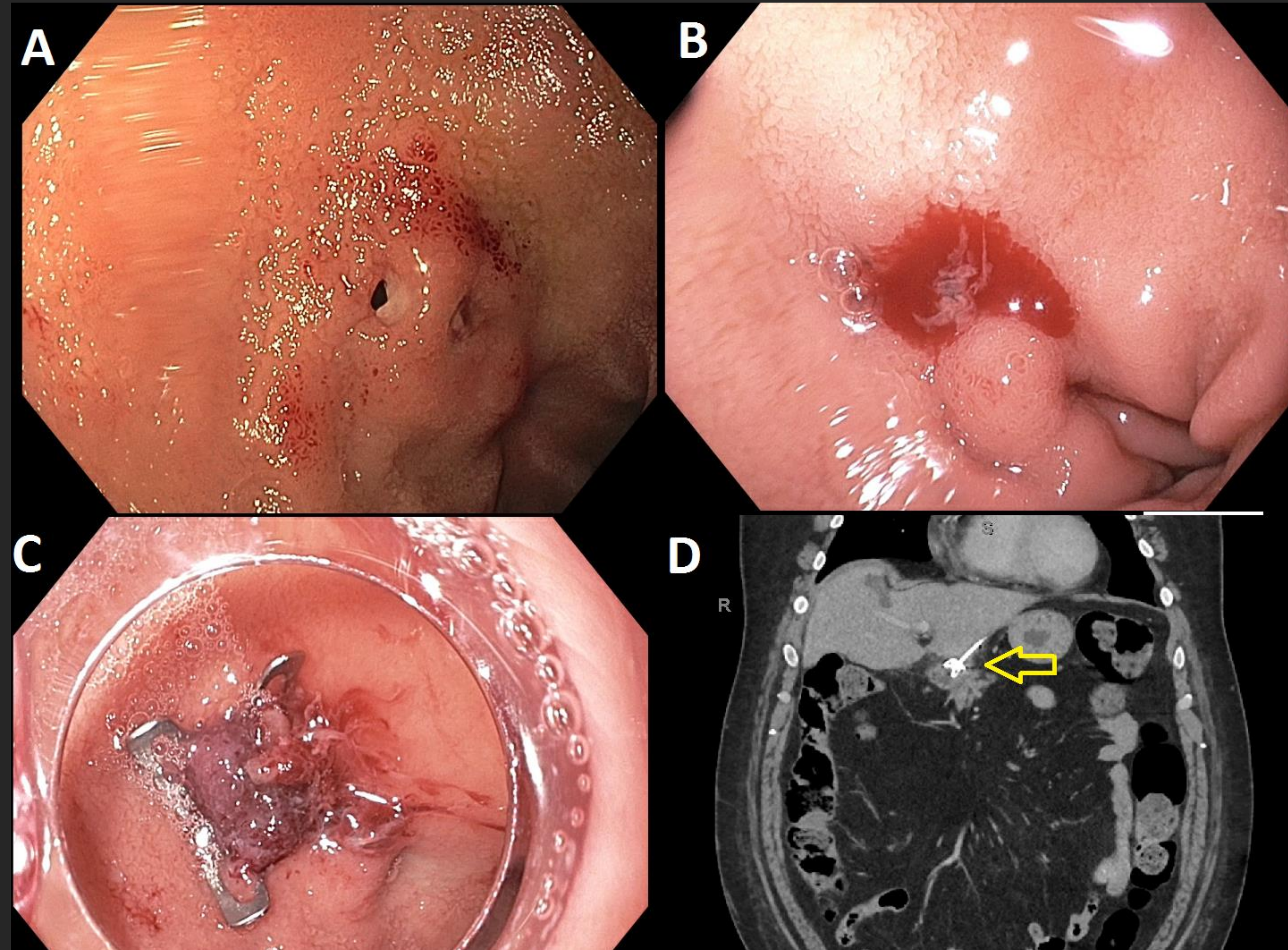
### Labs:

- Hemoglobin 5.3 gm/dL prior to transfusion

### Endoscopy:

- Initial endoscopy: resolved bleeding, no intervention with plan for prompt repeat EGD (A)
- Repeat endoscopy: active bleeding (B), over the scope clip placement with successful closure

# Duodenal fistula from hepatic artery infusion pump is closed with over-the-scope clip.



### Follow-Up Imaging:

- CT scan showing hepatic artery infusion pump in close proximity with over the scope clip

### Discussion

Hepatic artery infusion pump is a device used to deliver **local chemotherapy** to the liver for treatment of **metastatic disease**.

Bleeding due to duodenal fistula is a very rare complication of HAI

No cases of closure with an **over the scope clip** have been reported in the literature to date.

### Prevalence of Hepatic Artery Infusion Pump Complications

Complication	Percentage
Arterial Thrombosis	6%
Catheter occlusion/dislodgement	6%
Extrahepatic perfusion	3%

Our case offers a novel technique for closure of duodenal fistula as a result of HAI placement

