



Not Just Another Food Bolus: Large Cell Neuroendocrine Carcinoma of the Esophagus Presenting as Acute Esophageal Food Impaction

Henry Lam, DO¹, Margaret Spinoso, MD², Matthew Sullivan, DO²
Lehigh Valley Health Network, Allentown, PA
¹Department of Medicine, ²Division of Gastroenterology

Introduction

Food impactions arise due to structural or functional abnormalities along the GI tract.

Presentation

- A 71-year-old male presented with trouble swallowing and epigastric pain five hours after eating a chicken sandwich.
- He had been experiencing dysphagia and odynophagia for two months.
- Symptoms were especially severe and persistent on day of presentation.

Introduction

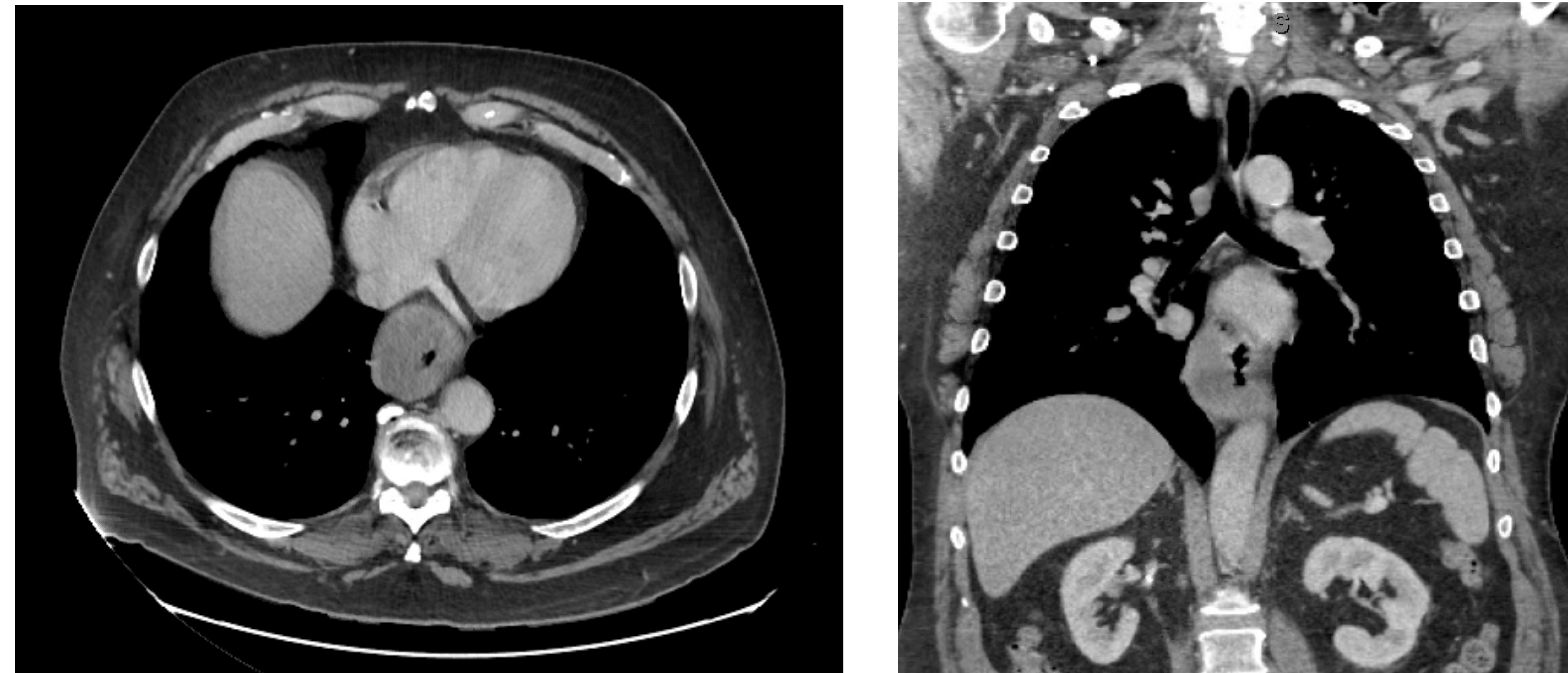


Figure 2. CT CAP showing 6.7 cm distal esophageal mass correlating with endoscopy findings.

Discussion

- Neuroendocrine carcinoma is a rare type of esophageal malignancy with an incidence of 0.4-2% of cases.
- Prognosis is usually poor given its aggressive nature and advanced stage at initial diagnosis.
- Treatment depends on extent of disease.
 - Limited disease: esophagectomy w/ lymph node dissection +/- adjuvant chemotherapy.
 - Extended disease: palliative chemotherapy +/- adjuvant radiotherapy

Endoscopic Evaluation



Figure 1. EGD showing food impaction which was cleared revealing a circumferential fungating and necrotic appearing mass 28 cm from the incisors.

Conclusion

Clinicians must maintain malignancy, including neuroendocrine carcinoma, as part of their differential for food impaction given the life altering implications of such a diagnosis.

References

1. Egashira A, Morita M, Kumagai R, Taguchi KI, Ueda M, Yamaguchi S, Yamamoto M, Minami K, Ikeda Y, Toh Y. Neuroendocrine carcinoma of the esophagus: Clinicopathological and immunohistochemical features of 14 cases. PLoS One. 2017 Mar 13;12(3):e0173501. doi: 10.1371/journal.pone.0173501. PMID: 28288180; PMCID: PMC5348034.
2. Fung BM, Sweetser S, Wong Kee Song LM, Tabibian JH. Foreign object ingestion and esophageal food impaction: An update and review on endoscopic management. World J Gastrointest Endosc. 2019 Mar 16;11(3):174-192. doi: 10.4253/wjge.v11.i3.174. PMID: 30918584; PMCID: PMC6425280.
3. Patel HD, Beck J, Kataria A, Gross GW, Echavarria J. Primary Large Cell Neuroendocrine Carcinoma of the Esophagus Disguised as a Food Impaction. ACG Case Rep J. 2020 Jun 18;7(6):e00384. doi: 10.14309/crj.0000000000000384. PMID: 33062770; PMCID: PMC7535686.

