

Characteristics of individuals receiving hepatitis B treatment in Ethiopia: 18-month follow up

Manaswita Tappata¹, Marina Farah², Chimaobi Anugwom¹, Eden Bisrat³, Amir Sultan^{1,3}, Jose D Debes¹

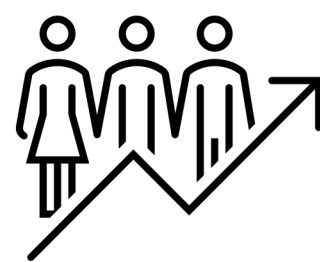
1: University of Minnesota, Minneapolis, MN, 2: University of Balamand, Beirut, Lebanon, 3: Addis Ababa University, Addis Ababa, Ethiopia

Introduction

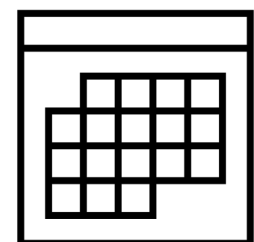
- **Hepatitis B virus (HBV)** infection is a major risk factor for **hepatocellular carcinoma (HCC)** in Africa
- It has higher morbidity and mortality in part due to disparities in access to viral treatment
- We aimed to identify characteristics of individuals who were **treated versus untreated** for HBV in Ethiopia.



Methods



We identified **HBsAg positive** patients in a referral clinic in Addis Ababa, Ethiopia starting in January 2020.



Clinical, laboratory and demographic data were obtained during **clinic visits** at baseline, 6, 12, 18 months, and recorded in REDCap.

Results



150 patients

51 treated

99 untreated

Male	86% (n=44)	75% (n=74)
Median age	35 (IQR 29-46)	34 (IQR 28-41)
Higher education	56% (n=17)	42% (n=27)
Median AST	36 (IQR 27-56)	27 (IQR 22-36)
Median ALT	32 (IQR 21-39)	26 (IQR 20-38)
HBV DNA	25, 921 (IQR 3,162-178,430)	389 (IQR 102-1,816)
Ascites*	43% (n=22)	5% (n=5)
Abnormal U/S*	60% (n=29)	20% (n=18)
APRI	0.54 (IQR 0.37-1.51)	0.31 (IQR 0.21-0.46)
FIB4	1.79 (IQR 0.86-2.65)	0.85 (0.51-1.28)
Coffee use*	90% (n=28)	70% (n=45)
Tobacco use	0% (n=0)	0% (n=0)
Alcohol*	0% (n=0)	5% (n=5)
Khat	0% (n=0)	9% (n=6)

*statistically significant p<0.05

Results

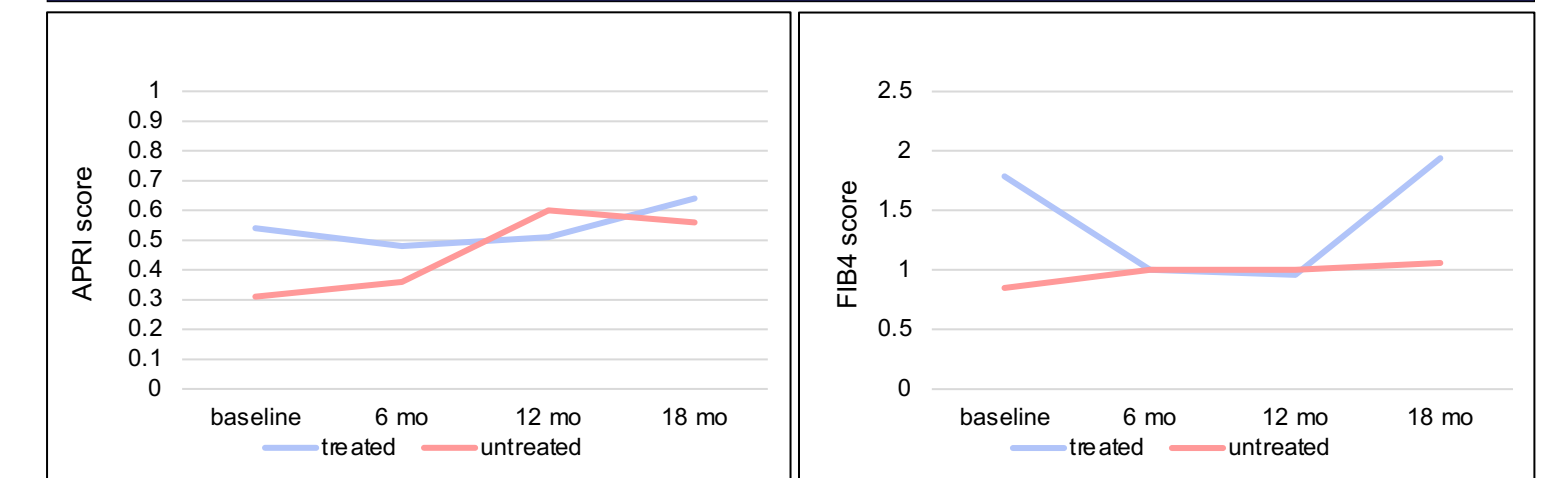


Figure 1. (A) APRI and (B) FIB 4 score over time in treated and untreated groups

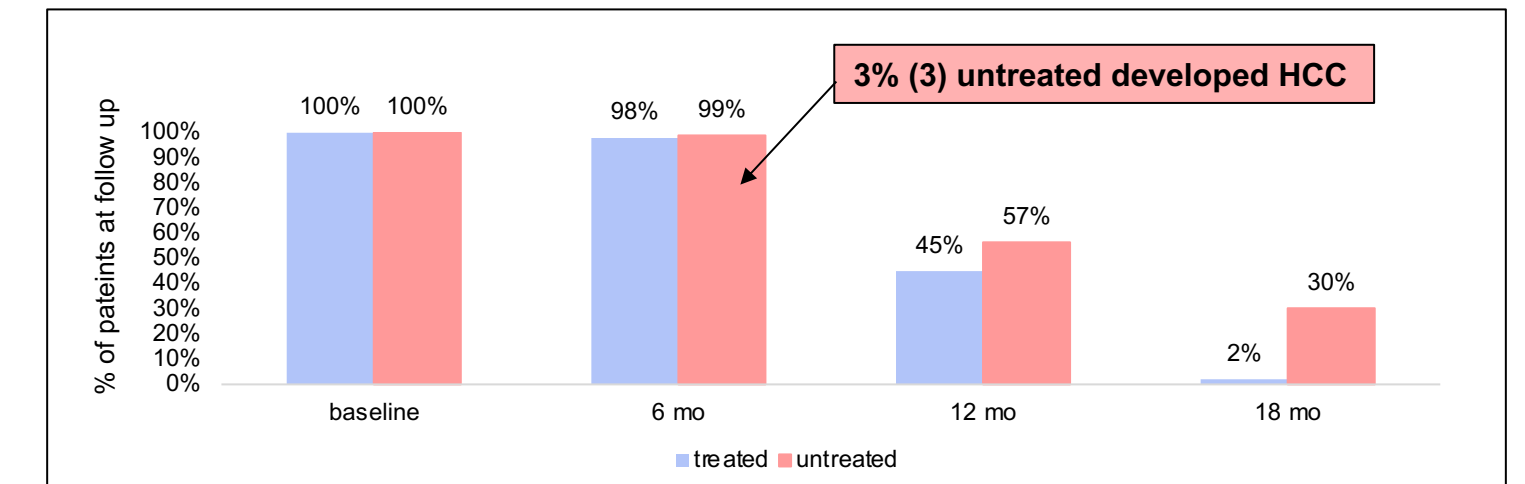


Figure 2. Percent of patients at follow up visits in treated and untreated groups

Conclusions

- Individuals on **HBV treatment** were more likely to be **male**, and have **higher baseline lab findings**.
- Those untreated showed more **liver-unhealthy habits** such as alcohol and khat consumption and less coffee intake.
- Untreated individuals developed **more HCC** at follow up.
- Interestingly, they were **more likely** to follow up at 18 months.