

# The Marching Band: Pseudoachalasia Secondary to Gastric Band Slippage

## BACKGROUND

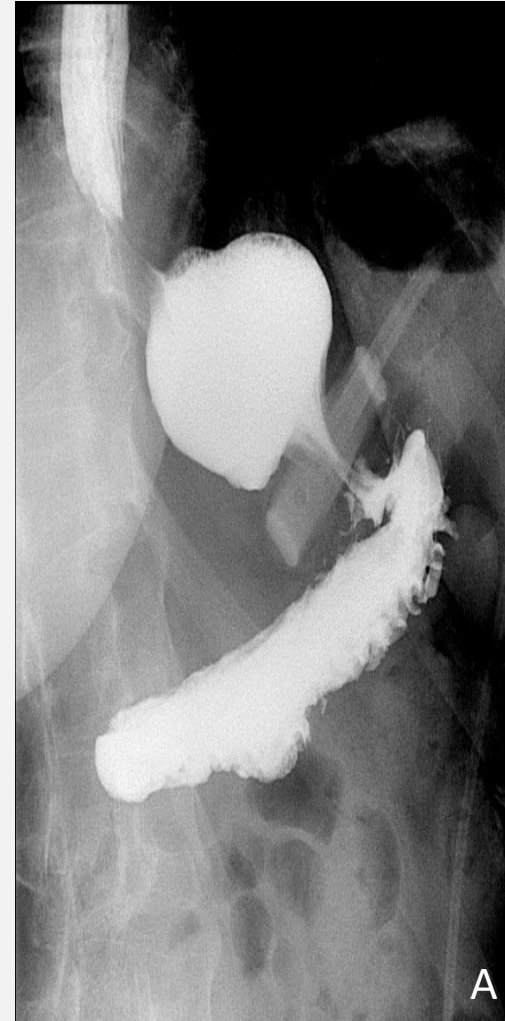
- Gastric band slippage is a late complication of laparoscopic adjustable gastric banding surgery (LAGBS) with an incidence of less than 5%.
- We present a case of pseudoachalasia caused by gastric band slippage in a patient with a remote history of LAGBS.

## CASE

- A 53-year-old female with a remote medical history of LAGBS for obesity ten years ago presented to our office with complaints of recurrent emesis for the last ten years.
- The episodes were associated with minimal retching, often self-induced to relieve chest discomfort.
- Her symptoms progressively worsened over months and evaluation at another office including a gastric emptying study was normal.

## CASE

- A recent EGD and colonoscopy a few months prior showed mild esophagitis.
- Proton pump inhibitors provided no relief.
- A gastric emptying study demonstrated no abnormalities. An upper gastrointestinal (UGI) series revealed tilting of the laparoscopic band, collimation around the thoracic esophagus immediately on barium swallow followed by passage of short amount of contrast along the narrowed diameter at the location of the band (figure A).
- Over the course of the study, significant stasis was noted in the thoracic esophagus causing severe restriction of passage confirming the diagnosis of gastric band slippage.
- She was referred to bariatric surgery for adjustment of the gastric band.



## CONCLUSIONS

- The complication rate from LAGBS increases by 3-4% each year that the band is left in-vivo and rises to 40% at 10 years.
- Complications such as slippage and obstruction at the band site present with nonspecific symptoms such as vomiting and regurgitation.
- Although majority of pseudoachalasia is cancer related, benign causes also exist.
- This case highlights the importance of primary care providers and gastroenterologists familiarizing themselves with presentation, diagnosis, and management of late complications of bariatric procedures as delayed diagnosis can severely affect quality of life as demonstrated by our case.

## REFERENCES

1. Kodner C, Hartman DR. Complications of Adjustable Gastric Banding Surgery for Obesity. AFP. 2014;89(10):813-818.